

# Refinery Gas Analyzer – Model 1115

- Sample types: Gas
- Full-range hydrogen detection using separate channel with nitrogen carrier gas
- Three channel – dual thermal conductivity detector and flame ionization detector (TCD/TCD/FID)
- Rugged packed columns – no degradation from H<sub>2</sub>O, NH<sub>3</sub> or other common contaminants
- Critical butene-1/isobutylene separation
- Includes Model 3062 Software, which contains a merge program to combine multichannel data into one report

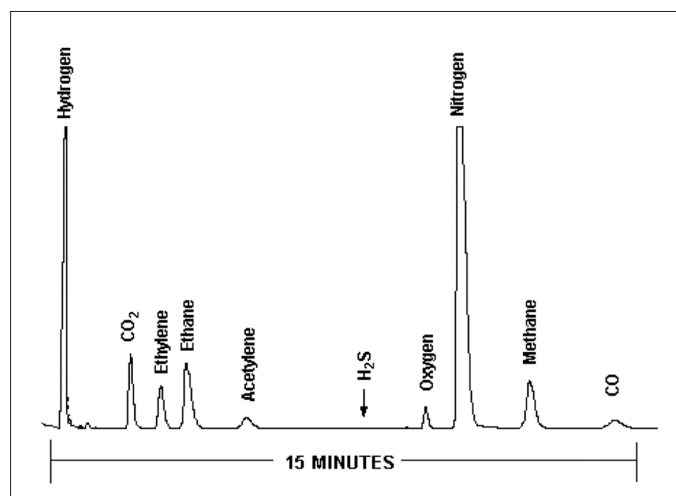
## Detected Compounds

- He, H<sub>2</sub>, O<sub>2</sub>, N<sub>2</sub>, CO<sub>2</sub>, CO, H<sub>2</sub>S, C<sub>1</sub> through C<sub>5</sub>, C<sub>5</sub>=/C<sub>6</sub>+ composite peak

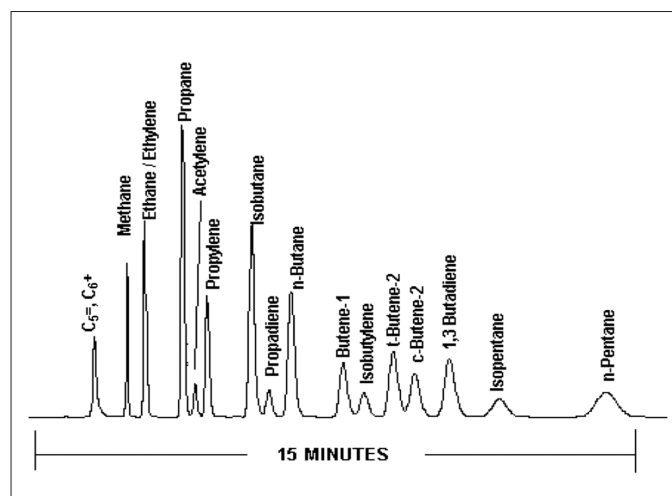
## Key Benefits

- Meets:
  - ASTM D1945
  - ASTM D1946
  - ASTM D2597
  - UOP 539-87
  - UOP 709
  - DIN 51872-4
- Rapid, 15-minute analysis time
- Plumbed with sulfur-resistant materials to enhance H<sub>2</sub>S detection
- Guaranteed detection ranges/concentration levels:

	Min (%)	Max (%)
<b>Channel A (TCD)</b>		
He and H <sub>2</sub>	0.01	100
<b>Channel B (TCD)</b>		
H <sub>2</sub> S	0.02	100
All other components	0.01	100
<b>Channel C (FID)</b>		
C <sub>5</sub> =/C <sub>6</sub> + composite	0.002	40
All other components	0.001	100



Channel A and B – TCD/TCD (electronically combined into one output).



Channel C – FID.

PerkinElmer Life and Analytical Sciences  
 710 Bridgeport Avenue  
 Shelton, CT 06484-4794 USA  
 Phone: (800) 762-4000 or  
 (+1) 203-925-4602  
[www.perkinelmer.com](http://www.perkinelmer.com)



For a complete listing of our global offices, visit [www.perkinelmer.com/lasoffices](http://www.perkinelmer.com/lasoffices)

©2006 PerkinElmer, Inc. All rights reserved. The PerkinElmer logo and design are registered trademarks of PerkinElmer, Inc. All other trademarks not owned by PerkinElmer, Inc. or its subsidiaries that are depicted herein are the property of their respective owners. PerkinElmer reserves the right to change this document at any time without notice and disclaims liability for editorial, pictorial or typographical errors.