

Natural Gas Analyzer – Model 2000

- Sample types: Gas
- Simple, low-cost solution
- Single channel – single FID
- Only hydrocarbons detected and measured – no interference from air or CO₂
- Designed so that the lowest boiling C₆ (2,2-dimethylbutane) is included in the backflush
- Rugged packed columns – no degradation from common contaminants
- Model 3062 Software available containing template for heating-value calculation and other sample specifications
- This analyzer is for natural gas. Natural gas does not contain light hydrocarbon unsaturates. LPG samples cannot be analyzed on this analyzer without modification. See Model 4036 or Model 4037, which meet ASTM D2163 methodology for LPG analysis

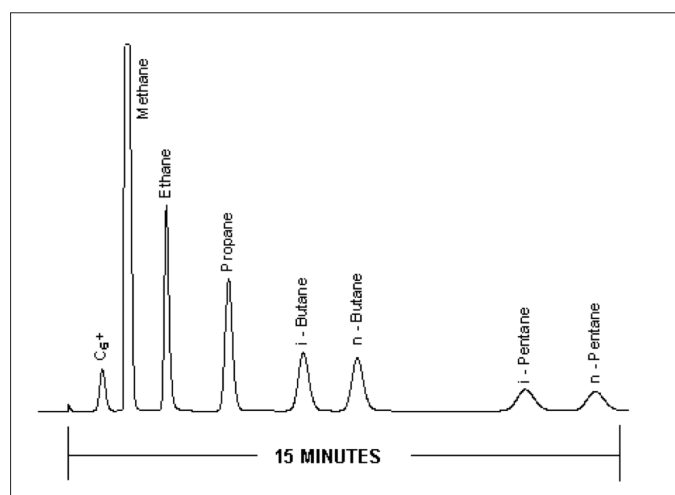
Detected Compounds

- C₁ through C₅, C₆+ composite

Key Benefits

- Meets:
 - ASTM D1945 (precision statement only)
- Guaranteed detection ranges/concentration levels:

	Min (%)	Max (%)
Channel A (FID)		
C ₆ + composite	0.005	10
All other components	0.005	100



Analysis of C₁ through C₅ and C₆+ composite by FID.

PerkinElmer Life and Analytical Sciences
 710 Bridgeport Avenue
 Shelton, CT 06484-4794 USA
 Phone: (800) 762-4000 or
 (+1) 203-925-4602
www.perkinelmer.com

ARNEL
Engineered Analytical Solutions


PerkinElmer[®]
precisely.

For a complete listing of our global offices, visit www.perkinelmer.com/lasoffices

©2006 PerkinElmer, Inc. All rights reserved. The PerkinElmer logo and design are registered trademarks of PerkinElmer, Inc. All other trademarks not owned by PerkinElmer, Inc. or its subsidiaries that are depicted herein are the property of their respective owners. PerkinElmer reserves the right to change this document at any time without notice and disclaims liability for editorial, pictorial or typographical errors.