

Light Gas Analyzer – Model 4016

- Sample types: Gas
- Typical analyses: light gases, furnace gases, stack gases, combustion gases, decoking gases, mine gases
- Packed columns – single thermal conductivity detector (TCD)
- Often used as one channel of an analyzer – very versatile
- Some common added channels:
 - Flame ionization detector (FID) for better hydrocarbon detection
 - Methanizer/FID and purged-valve housings for trace CO and CO₂ analysis
 - Flame photometric detector (FPD) or a sulfur chemiluminescence detector

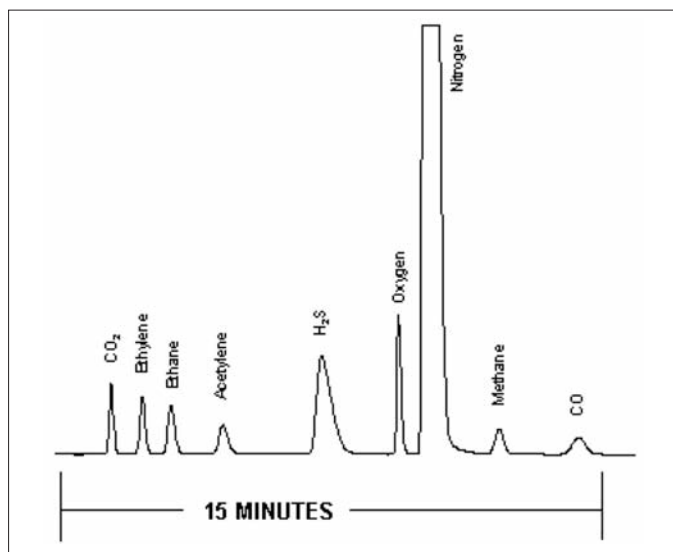
Detected Compounds

- Ar-O₂ composite, N₂, CH₄, CO, CO₂, ethylene, ethane, acetylene, H₂S

Key Benefits

- Meets:
 - ASTM D1946
- Guaranteed detection ranges/concentration levels:

	Min (%)	Max (%)
Channel B (TCD)		
H ₂ (mixed H ₂ /He carrier)	1	50
H ₂ (He carrier)	1	10
H ₂ S	0.02	100
All other components	0.01	100



Analysis of light gases by TCD.

PerkinElmer, Inc.
 940 Winter Street
 Waltham, MA 02451 USA
 Phone: (800) 762-4000 or
 (+1) 203-925-4602
www.perkinelmer.com

ARNEL
 Engineered Analytical Solutions

PerkinElmer
 precisely.

For a complete listing of our global offices, visit www.perkinelmer.com/lasoffices

©2008 PerkinElmer, Inc. All rights reserved. The PerkinElmer logo and design are registered trademarks of PerkinElmer, Inc. All other trademarks not owned by PerkinElmer, Inc. or its subsidiaries that are depicted herein are the property of their respective owners. PerkinElmer reserves the right to change this document at any time without notice and disclaims liability for editorial, pictorial or typographical errors.