

Trace Sulfur Component Analyzer – Model 4025

- Sample types: Gas
- Analyzes samples like refinery gas, natural gas, process gas, and Kraft gas
- Uses a sulfur chemiluminescence detector (SCD)
- Capillary-column solution
- Can be modified with a second or third channel to perform additional analyses
- Can be modified to analyze liquid and pressurized liquid samples (Model 4028)
- Can be designed to be online and/or a multistream system

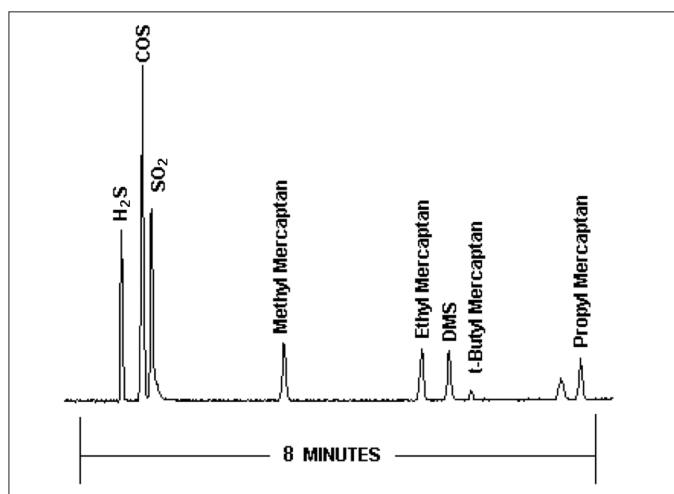
Key Benefits

- Meets:
 - ASTM D5504
 - ASTM D5623
 - ASTM D6021
- The SCD has an equimolar response to sulfur compounds, lack of carbon interference and requires simple calibration
- Guaranteed detection ranges/concentration levels:

	Min (ppb)
SCD	
All components	10

Detected Compounds

- H₂S, SO₂, COS, mercaptans, aromatic sulfur compounds, sulfides



Analysis of trace sulfur components by SCD.

PerkinElmer, Inc.
 940 Winter Street
 Waltham, MA 02451 USA
 Phone: (800) 762-4000 or
 (+1) 203-925-4602
www.perkinelmer.com

ARNEL
Engineered Analytical Solutions


PerkinElmer[®]
 precisely.

For a complete listing of our global offices, visit www.perkinelmer.com/lasoffices

©2007 PerkinElmer, Inc. All rights reserved. The PerkinElmer logo and design are registered trademarks of PerkinElmer, Inc. All other trademarks not owned by PerkinElmer, Inc. or its subsidiaries that are depicted herein are the property of their respective owners. PerkinElmer reserves the right to change this document at any time without notice and disclaims liability for editorial, pictorial or typographical errors.