

Trace Sulfur and Aromatics Component Analyzers – Models 4030/4430

- Sample types: Gas
- Analyzes samples like beverage-grade CO₂ and other bulk gases, plus polymer-grade ethylene and propylene gas
- Uses a photoionization detector (PID) and a sulfur chemiluminescence detector (SCD)
- The SCD has an equimolar response to sulfur compounds and requires simple calibration
- Dual capillary-column solution
- Can be modified to analyze alcohols, ketones and other hydrocarbons in samples (Model 4038)
- Includes permeation-tube calibration chamber (Model 4430)

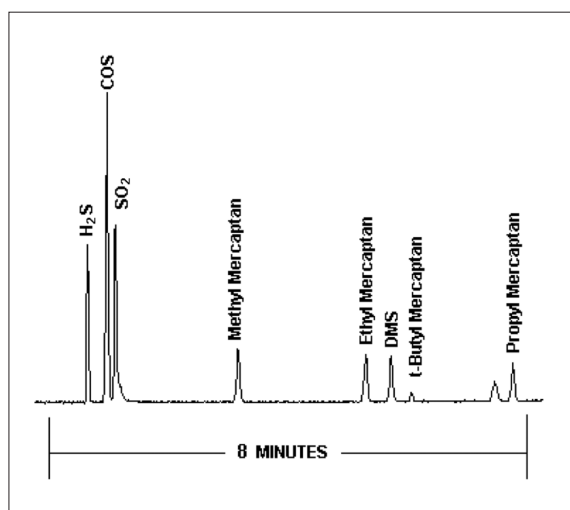
Detected Compounds

- H₂S, SO₂, COS, mercaptans, aromatic sulfur compounds, sulfides, benzene, toluene, xylenes, ethylbenzene and other aromatics

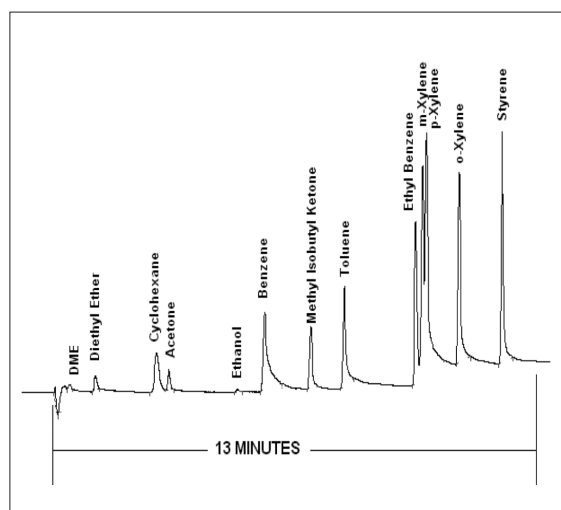
Key Benefits

- Guaranteed detection ranges/concentration levels:

	Min (ppb)
Channel A (SCD)	
All sulfur compounds	10
Channel B (PID)	
Benzene	5



Channel A – trace sulfur compounds (SCD).



Channel B – trace aromatics compounds (PID).

PerkinElmer, Inc.
 940 Winter Street
 Waltham, MA 02451 USA
 Phone: (800) 762-4000 or
 (+1) 203-925-4602
www.perkinelmer.com

ARNEL
 Engineered Analytical Solutions


PerkinElmer
 precisely.

For a complete listing of our global offices, visit www.perkinelmer.com/isooffices

©2007 PerkinElmer, Inc. All rights reserved. The PerkinElmer logo and design are registered trademarks of PerkinElmer, Inc. All other trademarks not owned by PerkinElmer, Inc. or its subsidiaries that are depicted herein are the property of their respective owners. PerkinElmer reserves the right to change this document at any time without notice and disclaims liability for editorial, pictorial or typographical errors.