

Trace Sulfur and Aromatic Component Analyzers in Beverage-Grade CO₂ – Models 6030/6430

- Sample types: Gas
- Detectors: photoionization detector (PID) and amperometric sulfur detector (ASD)
- The ASD has an equimolar response to sulfur compounds and requires simple calibration
- Dual capillary-column solution
- Can be modified to determine alcohols, ketones and other hydrocarbons in samples (Model 6038)
- Include permeation-tube calibration chamber (Model 6430)

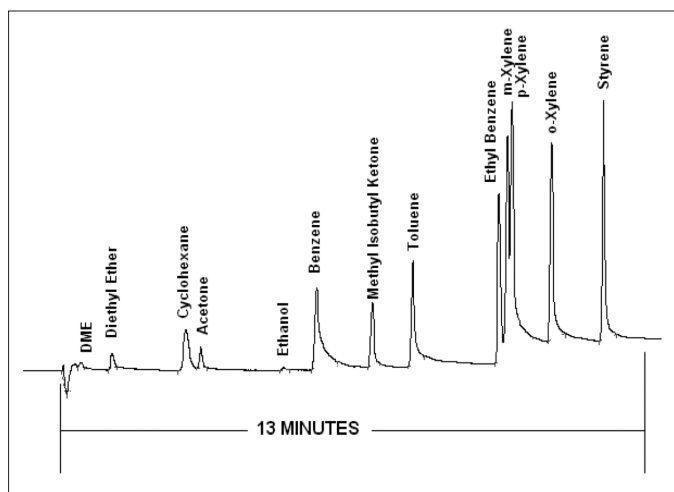
Detected Compounds

- H₂S, SO₂, COS, mercaptans, aromatic sulfur compounds, sulfides, benzene, toluene, xylenes, ethylbenzene and other aromatics

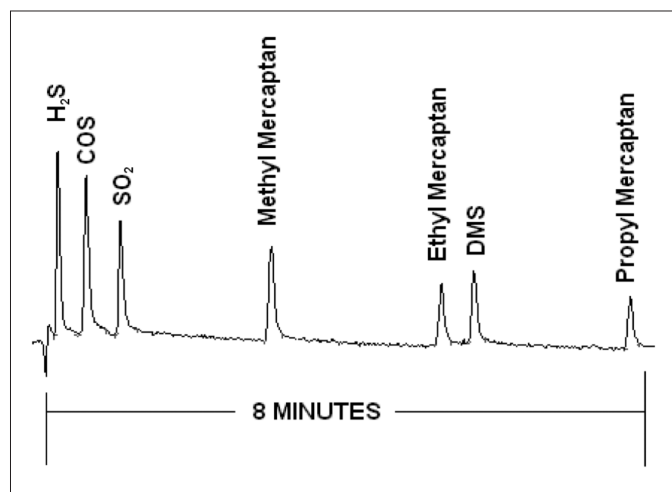
Key Benefits

- Electrochemical cell technology
- Guaranteed detection ranges/concentration levels:

	Min (ppb)
Channel A (PID)	
Benzene	5
All other components	10
Channel B (ASD)	
All sulfur compounds	10



Channel A – trace aromatic compounds (PID).



Channel B – trace sulfur compounds (ASD).

PerkinElmer, Inc.
940 Winter Street
Waltham, MA 02451 USA
Phone: (800) 762-4000 or
(+1) 203-925-4602
www.perkinelmer.com

ARNEL
Engineered Analytical Solutions


PerkinElmer
precisely.

For a complete listing of our global offices, visit www.perkinelmer.com/asooffices

©2008 PerkinElmer, Inc. All rights reserved. The PerkinElmer logo and design are registered trademarks of PerkinElmer, Inc. All other trademarks not owned by PerkinElmer, Inc. or its subsidiaries that are depicted herein are the property of their respective owners. PerkinElmer reserves the right to change this document at any time without notice and disclaims liability for editorial, pictorial or typographical errors.

007620A_02