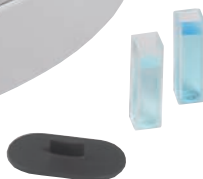


# LAMBDA XLS and XLS+ Spectrophotometers



It's not just a UV/Vis.  
It's a LAMBDA.



## One of the most trusted product lines in the industry is expanding.

When you see the name LAMBDA you know you're getting a quality instrument. We've been manufacturing UV/Vis and UV/Vis/NIR instruments under the name LAMBDA for over 60 years. We'd like to introduce you to the newest, smallest member of our family, the LAMBDA XLS – a personal UV/Vis spectrophotometer for all your routine laboratory needs.



## This is one time when big news comes in a small package.

Intuitive, easy to use tools can save you both time and money. The LAMBDA XLS was designed specifically with this in mind. With the latest innovative technology, this instrument allows you to invest your time in analyzing important data, rather than struggling to generate it. In addition, built-in, multiple language configurations will allow you to select the language most applicable to you.

*Español*

*Deutsch*

*Français*

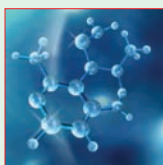
*Italiano*

*Japanese*



## Performance that wow's the crowd and the finance people.

With its large LCD screen and full scanning capabilities, the LAMBDA XLS is a crowd pleaser. Built to last, easy to use and even easier to own. No moving parts, virtually no maintenance and no consumables make the LAMBDA XLS the perfect tool when the instrument just needs to work, day-in and day-out. Rely on the LAMBDA XLS. It's the smart choice for your laboratory in any application from teaching – where operator training may be an issue, to the most advanced R&D laboratory – where precious samples need to be processed right, the first time. The LAMBDA XLS will win the hearts and minds of anyone working with it. After all, it is a LAMBDA.



**Speed, stability and confidence!**

Order online at [www.perkinelmer.com/lambdaxls](http://www.perkinelmer.com/lambdaxls)



  
**PerkinElmer**<sup>®</sup>  
precisely.



designed to make

# spectrophotometry easier

## You don't need an impressive budget, to have an impressive instrument.

The performance you'll experience with the LAMBDA XLS is only normally associated with much more expensive designs. Experience:

- Instant answers – unlike other instruments on the market, our LAMBDA XLS requires no warm up time. Our ultra fast initialization will have you analyzing a full range of spectrum in less than 3 seconds.
- Continuous uptime – our maintenance-free design with no moving parts, Xenon Light Source (XLS) and innovative polychromator technology provides you the reliability your laboratory needs.
- Superb stability – avoid instrument drift from excess heat with our split beam design and external power supply.
- Ruggedness – our sealed, zero-bounce membrane keypad is resistant to even the largest solvent spills.

## Provides you with the versatility to do just about anything

Your work environment may be complex, but that doesn't mean your instrument needs to be. With the simplicity and elegance of the LAMBDA XLS, you'll be empowered to analyze samples when and where your projects demand:

- View, expand, and manipulate full spectra quickly and easily with the large, clear, 11.5 cm by 8.8 cm, backlit LCD display.
- Feel confident – low stray light provides exceptional linearity and confidence in your measurements.
- Personalize your laboratory – with the capacity to store up to 90 user-developed methods.
- Convenient sampling flexibility – measure your samples in any of our high quality precision glass, quartz, or disposable cells:
  - 10, 20 and 40 mm pathlength cells
  - Semi-micro cells: 700  $\mu$ l
  - Micro cells: 70  $\mu$ l
  - Ultra-micro cells: 15  $\mu$ l





# the flexibility and performance you expect from a LAMBDA

## Share the knowledge – multiple archiving and data sharing options

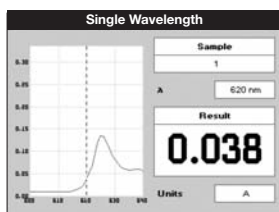
- **Collect data from up to 8 instruments:** a single PC using PVC application software can be configured to accept and automatically display data from up to 8 instruments. Data can be archived in Excel® (.xls), ASCII (.csv or .txt), graphics (.emf), or rich text (.rtf) formats.
- **Built in USB port:** transfer data to your computer for viewing, manipulating, printing, or archiving using the built in USB connection port. LAMBDA XLS PVC software is provided as standard with all instruments.
- **Optional integrated thermal printer:** For your permanent records, use the optional thermal printer to print all your results. With the standard 57 mm printer roll, your print-out can accommodate:

- Calibration Data
- Result
- Time and Date

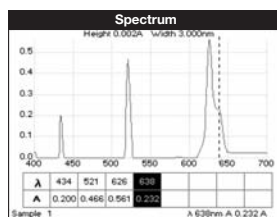
- **Secure Digital (SD) Flash Storage Card or Bluetooth® compatible:** for your archiving convenience, the LAMBDA XLS can be outfitted to accommodate a standard SD flash storage card or Bluetooth® accessory allowing you additional flexibility for transferring data.

## Experience the power – flexible on-board software

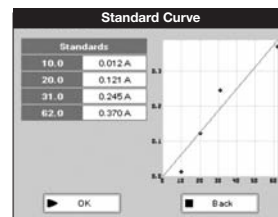
The LAMBDA XLS software is optimized to provide you with answers fast and conveniently. Save your own methods or choose from our broad range of pre-loaded measurement modes for simple efficient analysis.



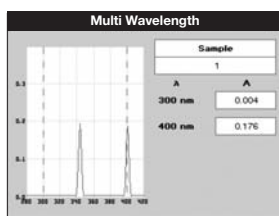
Allows you to specify a single wavelength to acquire data in %T or absorbance



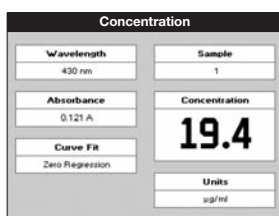
You can define a spectral range over which spectrum will be acquired and displayed in %T or absorbance



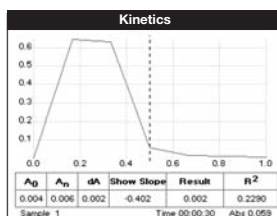
Up to 9 standards can be used to develop and store a calibration curve which will be used to determine a sample concentration



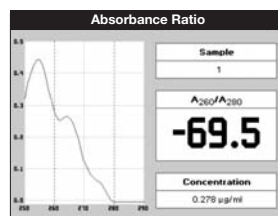
Data will be acquired at selected wavelengths and displayed in %T or absorbance



Data acquired at a defined wavelength will be multiplied by a constant selected by the user and the result displayed



Enables changes in absorbance or concentration at user-defined wavelengths to be measured as a function of time



Calculates absorbance or concentration ratios using two defined wavelengths

## SPECIFICATIONS

## LAMBDA XLS

## LAMBDA XLS+

Optical design		Split beam	
Spectral bandwidth		5 nm	3 nm
Wavelength	Range	190-1100 nm	
	Scanning range	200-950 nm	
	Calibration	Automatic when the instrument is switched on	
	Accuracy	±2 nm	
	Reproducibility	±1 nm	
Light source		Pulsed Xenon lamp – 5+ year lifetime	
Photometric	Range	-0.300 to 2.500 A, 0 to 199 %T	
	Linearity	±0.005 A or 1% of the reading, whichever is the greater at 546 nm	
	Reproducibility	±0.003 A (0-0.5 A), ±0.007 A (0.5-1.0 A)	
Stray light		<0.5% at 220 nm and 340 nm using NaNO <sub>2</sub>	
Zero stability		±0.01 A/hour	
Noise		0.005 peak to peak 0.002 rms	
Stored capacity		90 methods	
Display		11.5 cm x 8.8 cm	
Keypad		Sealed membrane keypad	
Outputs		USB, SD Card (optional), Bluetooth® (optional), Printer (optional)	
Dimensions (WxHxD)		340 x 170 x 330 mm (340 x 170 x 420 mm with printer attached)	
Weight		3.2 kg (7.1 lb)	
Power input		100-250 V, 50/60 Hz, Max 30 VA	
Languages		English, Spanish, German, French, Italian, Japanese	
Warranty		1 year	

## ONLINE ORDERING INFORMATION

Part No.	System
L7110189	LAMBDA XLS
L7110190	LAMBDA XLS with Printer
L7110191	LAMBDA XLS with SD Card
L7110192	LAMBDA XLS+
L7110193	LAMBDA XLS+ with Printer
L7110194	LAMBDA XLS+ with SD Card

## OPTIONS AND CONSUMABLES

Part No.	Description
L7110230	Printer module
L7110232	Spare printer paper (20 rolls)
L7110233	Bluetooth® accessory



**Speed, stability and confidence!**  
Order online at [www.perkinelmer.com/lambdaxls](http://www.perkinelmer.com/lambdaxls)

PerkinElmer, Inc.  
940 Winter Street  
Waltham, MA 02451 USA  
Phone: (800) 762-4000 or  
(+1) 203-925-4602  
[www.perkinelmer.com](http://www.perkinelmer.com)



For a complete listing of our global offices, visit [www.perkinelmer.com/lasoffices](http://www.perkinelmer.com/lasoffices)

©2008 PerkinElmer, Inc. All rights reserved. The PerkinElmer logo and design are registered trademarks of PerkinElmer, Inc. LAMBDA is a trademark and PerkinElmer is a registered trademark of PerkinElmer, Inc. or its subsidiaries, in the United States and other countries. Bluetooth is a registered trademark of Bluetooth SIG, Inc. Excel is a registered trademark of Microsoft Corporation. All other trademarks not owned by PerkinElmer, Inc. or its subsidiaries that are depicted herein are the property of their respective owners. PerkinElmer reserves the right to change this document at any time without notice and disclaims liability for editorial, pictorial or typographical errors.