

## CLONED DOPAMINE RECEPTOR SUBTYPE 1, HUMAN (hD<sub>1</sub>)

### PRODUCED IN L CELLS

**Product No.: 6110513**

*Please note that this is a representative technical data sheet, and that the specific lot data can vary from lot to lot. For specific information about our current lot, please contact your local PerkinElmer office.*

#### SPECIFIC LOT DATA

<b>LOT NUMBER:</b>	<b>6110513-27</b>
<b>SPECIFIC ACTIVITY:</b>	7.5 pmol / mg membrane protein
<b>CONCENTRATION:</b>	0.4 mg protein / ml
<b>PACKAGING:</b>	50 mM Tris-HCl, pH 7.4, 10% glycerol, 1% BSA
<b>FORMAT:</b>	50 units / 250 µl
<b>STABILITY:</b>	The long term stability of 6110513 is currently being evaluated. Initial studies indicate that 6110513 can retain its original specific activity for at least 12 months when stored at -80°C in its original packaging solution.

#### RECOMMENDED ASSAY CONDITIONS

<b>Incubation buffer:</b>	50 mM Tris-HCl pH 7.4 @ 27°C 5 mM MgCl <sub>2</sub> 5 mM EDTA	5 mM KCl 1.5 mM CaCl <sub>2</sub>
<b>Binding protocol:</b>	Binding assays are performed in 540 µl total volume according to the following conditions:	
	1 - Membrane dilution:	0.25 ml of membranes (6110513-27) + 24.75 ml incubation buffer
	2 - Incubation:	20 µl buffer or unlabeled ligand <sup>1</sup> 20 µl radioligand <sup>2</sup> 500 µl diluted membranes
	3 - Incubation time:	60 minutes at 27°C
	4 - Filtration:	Over GF/C filter (5 mm diam., presoaked in 0.3% polyethylenimine) then washed 9x with 500 µl of ice cold 50 mM Tris-HCl, pH 7.4 at 4°C.

<sup>1</sup>PerkinElmer BioSignal uses (+)Butaclamol at a concentration of 1 µM

<sup>2</sup>PerkinElmer BioSignal uses [<sup>3</sup>H] SCH 23390 at a concentration of 0.2 nM for competition assays

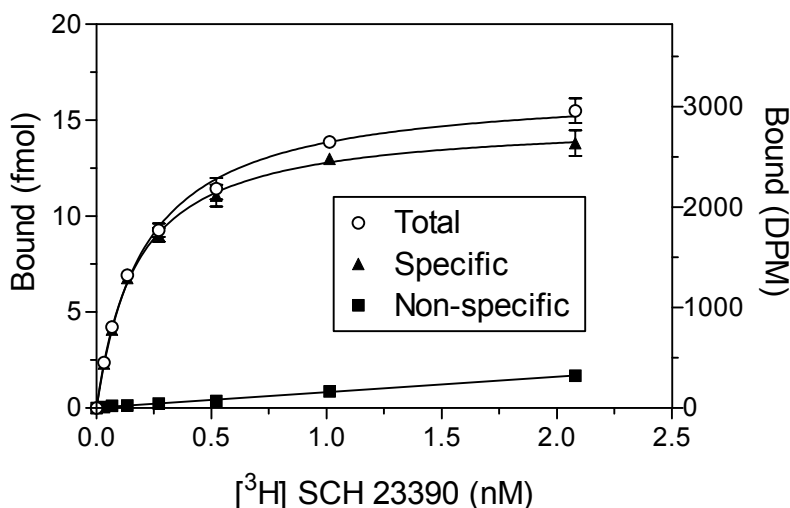
Note: PerkinElmer BioSignal defines the unit for this receptor as the quantity of receptor protein that will yield specific binding of approximately 1,000 DPM at a concentration of radioligand close to the K<sub>d</sub> value and using the recommended assay conditions.

**CLOINED DOPAMINE RECEPTOR SUBTYPE 1, HUMAN (hD<sub>1</sub>)**

**PRODUCED IN L CELLS**

**SATURATION CURVE**

**Lot No: 6110513-27**



Typical affinity constants found with SignalScreen® hD1 receptor

LIGAND	Ki (nM)
<b>[<sup>3</sup>H] SCH 23390</b>	<b>0.18 (Kd)</b>
SKF-83566	1.8
(+)Butaclamol	2.1
Haloperidol	50
Spiperone	926

**LIMITED WARRANTY:** PerkinElmer BioSignal Inc., a subsidiary of PerkinElmer Life and Analytical Sciences, warrants that, at the time of shipment, the products sold by it are free from defects in material and workmanship and conform to specifications which accompany the product. PerkinElmer BioSignal Inc. makes no other warranty, express or implied with respect to the products, including any warranty of merchantability or fitness for any particular purpose. Notification of any breach of warranty must be made within 60 days of receipt unless provided in writing by PerkinElmer BioSignal Inc. No claim shall be honored if the customer fails to notify PerkinElmer BioSignal Inc. within the period specified. The sole and exclusive remedy of the customer for any liability of PerkinElmer BioSignal Inc. of any kind including liability based upon warranty (express or implied whether contained herein or elsewhere), strict liability contract or otherwise is limited to the replacement of the goods or the refunds of the invoice price of goods. PerkinElmer BioSignal Inc. shall not in any case be liable for special, incidental or consequential damages of any kind.

**Worldwide Headquarters:** PerkinElmer Life and Analytical Sciences, 549 Albany Street, Boston, MA 02118-2512 USA (800) 551-2121  
**European Headquarters:** PerkinElmer Life and Analytical Sciences, Imperiastraat 8, BE-1930 Zaventem Belgium  
**Technical Support:** in Europe:techsupport.europe@perkinelmer.com in US and Rest of World:techsupport@perkinelmer.com  
**Belgium:** Tel: 0800 94 540 • **France:** Tel:0800 90 77 62 • **Netherlands:** Tel: 0800 02 23 042 • **Germany:** Tel: 0800 1 81 00 32 • **United Kingdom:** Tel: 0800 89 60 46 **Switzerland:** Tel:0800 55 50 27 • **Italy:** Tel: 800 79 03 10 • **Sweden:** Tel:020 79 07 35 • **Norway:** Tel:800 11 947 • **Denmark:** Tel:80 88 3477 • **Spain:** Tel:900 973 255